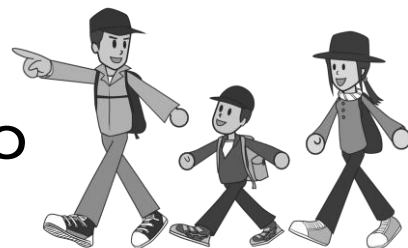


# Hiking Manner Sheet in Upper Nikko



Please follow these manners on your hiking in order to make your good memories in Upper Nikko.

## Toilet

➡ You should go the bathroom before hiking. Please bring some portable toilets in case of emergency.

## Garbage

➡ Please think it is that your bring things are all garbage and have to bring it out since especially foods effect wild animals and plants.

## Hiking course

➡ Please do not step off the wooden path to preserve soft ground in where there are wooden path area. And Please walk along the hiking course in where There is no wooden path area.

## Do not collect and harm nature contents

➡ We are prohibited by law from collecting and harming nature contents in a part of area, which are core area of Nikko National park.

## Considering the feelings of other visitors.

- Please keep a line on right side in hiking course.
- Please do not make noises and loud voices.
- Greeting do not need to say loud voices, it is enough to a slight bow.
  - \* Most visitor are annoyed by greeting with loud voices from group like school children.